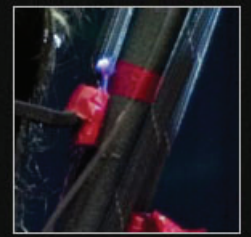
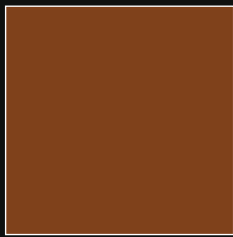
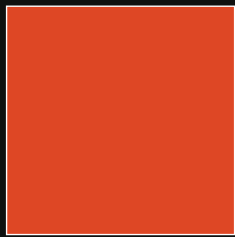
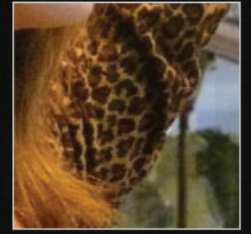
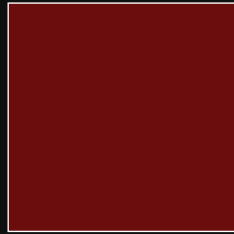
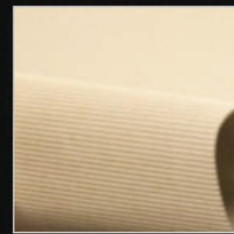
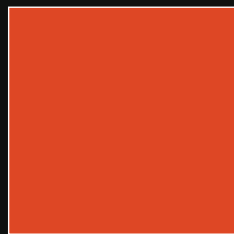
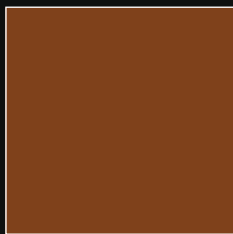
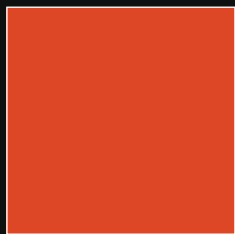
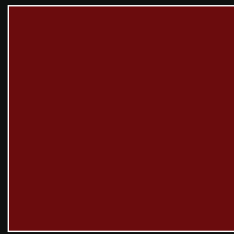


# PSi#18

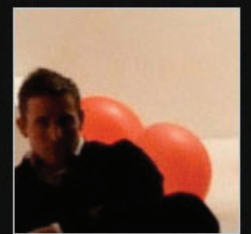
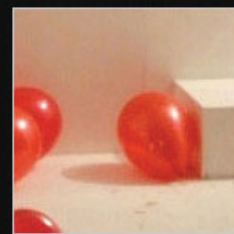
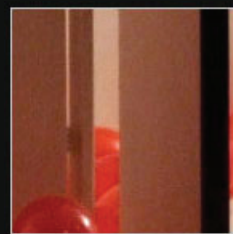
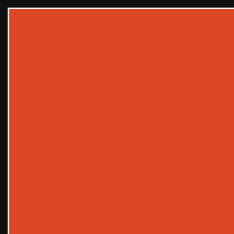
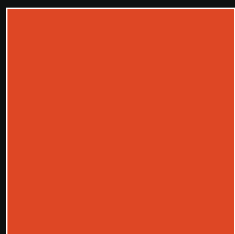
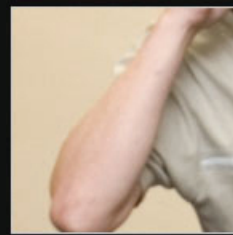
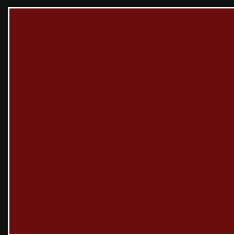
performance :: culture :: industry



# University of Leeds, UK

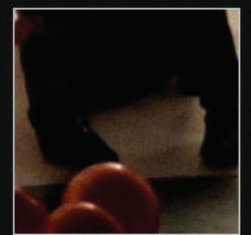
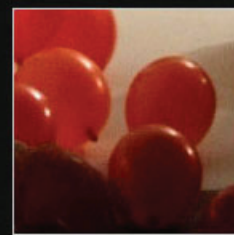
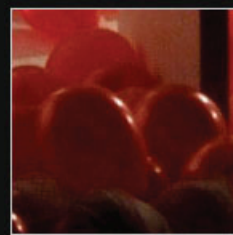


27 June -  
1 July 2012



# PSi#18

performance :: culture :: industry





## Welcome to P*Si*#18

The conference theme was developed to reflect and explore the complex interaction between 'performance', 'culture' and 'industry'. And over the year of planning for the conference, the accelerating crisis in neoliberalism has lent further urgency to the issues. At the heart, perhaps, is the recognition that there is often a fundamental tension between cultural value and economic value; and that the conditions under which performance is made usually demand that this tension is accommodated somehow. We do not propose that it is a simple matter of binaries: culture/industry, intrinsic value/instrumental value – or indeed ecology/economy. Rather, we want to locate this debate within wider and contemporary cultural and economic concerns in order to look at where the future of performance studies – in its various manifestations - may lie. Responses to the call were inventive and imaginative and the programme comprises a rich range of ways – through shifts, panels, roundtables and plenaries - to engage and stimulate debate from a variety of perspectives.

The annual P*Si* conference usually takes place alongside an existing festival of international, contemporary performance. Whilst Leeds is rich in cultural events and networks of contemporary art and performance, up until now there has not been such a festival. But the opportunity of P*Si* coming to Leeds served as the catalyst to inaugurate one. We have created a partnership between the University and some of the key cultural providers in Leeds - principally Opera North, West Yorkshire Playhouse, Leeds City Council, Yorkshire Dance and the Yorkshire International Performing Arts Network - to develop Ludus Festival Leeds. We intend to build on the relationships that have been established to make Ludus a sustainable, biennial event. So Ludus is not simply a festival for the conference, but, as the name suggests, we hope that conference delegates, alongside citizens of Leeds, will enjoy the various playful ways in which the festival seeks to engage a wide range of audiences. The international programme has been developed through research and consultation with the Centre for Performance Research.

The P*Si* conference coming to Leeds has, then, lent impetus to a deeper engagement between University of Leeds and the cultural life of the city of Leeds. In addition to the innovation of Ludus Festival Leeds, the 'porous' shifts which are part of the conference are also available to a wider audience: they allow the work of the conference to resonate beyond the campus and across the city.

**Joslin McKinney and Mick Wallis, P*Si*#18 conference directors  
School of Performance & Cultural Industries, University of Leeds**

## PSi#18 theme and tracks

### *performance :: culture :: industry*

We invite academics, artists and other practitioners to debate, develop, contest and celebrate the relationships between culture, industry and performance – now, in the past, and in possible futures. We have the following areas in mind; and our minds are open to more:

#### **Value and efficacy track**

*What are the synergies and contradictions between economic and cultural value in the field of performance? How can these be understood in terms of performance? Can we distinguish intrinsic from instrumental value? What, in our various circumstances, are the problematics of both defining and measuring cultural and economic efficacies of performance practice? What methodologies and rhetorics do and might we deploy?*

#### **Commercial and amateur track**

*How is the commercial stage being addressed from within the performance studies frame? How is amateur performance being addressed from within the performance studies frame?*

#### **Cultural articulations track**

*How has performance addressed and how is it addressing the various alienations, needs, gains and negotiations associated with economic, cultural and refugee migration? How do economic conditions co-determine how cultural identities are performed, negotiated and resisted through performance? What is the present, past and future of cultural performance? What are the present and future possibilities for performance practice and understanding across cultures? Or against cultural boundary-making itself?*

#### **Relations and determinations 'track'**

*How do economic and cultural drivers determine the relationship between the academy and performance practice beyond its walls? What effects is the change in the global economic landscape having on performance studies? How has performance engaged, and how does it and might it engage, with the several cultural industries? What has performance studies to contribute?*

#### **Training, labour and innovation track**

*Where and how does performance practice develop; and what are the cultural and economic drivers? What are the relationships between and within the academic and industrial spheres in the training of professionals, including performers, directors, scenic artists and technicians? What is the present and future of vocational performer training conducted outside educational systems – e.g. within the family?*

#### **Economy / Ecology track**

*How has, does and might performance engage with concerns around environmental change and ecological impact? How might a performative focus on landscape, locality or habitus enable us to rethink the relationship of the personal, the economic, the political and the ecological?*

## PSi#18 programme design

As is usual at a PSi conference, there is much more to see and do than is possible in the five days of the conference. One way to plan your conference experience might be to follow a particular track – or to plot a course across tracks. In each of the 11 parallel sessions, events are grouped according to track and listed alphabetically within the track; and the short abstracts booklet provides more detail on the events and their presenters. Longer abstracts for each of the events can be found on our website: [www.psi18.org](http://www.psi18.org).

We have tried to keep to a maximum of three papers per 90 minute session to allow for plenty of time for reflection and questions, although some presenters have devised other methods to stimulate discussion (roundtables for example) and a few of the curated panels will run for up to 2 hours (these exceptions are noted in the programme).

Some of the sessions are happening over the lunch break. You will be able to book a packed lunch in advance (ask at the Help Desk).

Any changes to the published schedule will be posted daily to twitter and at the help desk in Parkinson Court.

Scratch seminars: We hope that being at the conference will inspire new conversations and exchanges between delegates. To help this happen we will have a 'scratch' seminar space which will be available for delegates to book for up to 90 minutes at a time during the conference. Please see [www.psi18.org](http://www.psi18.org) for details – or ask at the conference help desk.

### Virtual PSi#18

Various virtual means have been established to supplement and facilitate face-to-face discussion, before, during and after the conference:

- You will be able to revisit the plenary events on Wednesday, Thursday and Friday through podcasts posted to the website the next morning or afternoon.
- You can share digital material pertinent to the conference theme through our website. Please upload it to an appropriate file / media sharing service (such as YouTube, Vimeo, YouSendIt, DropBox, SendSpace etc.) and e-mail the hyperlink to [psi18@leeds.ac.uk](mailto:psi18@leeds.ac.uk) together with a brief description of the content quoting 'hyperlink' in the subject line.
- You can also continue discussions through the blog or through twitter. If you wish to contribute a new blog post, please e-mail the text to [psi18@leeds.ac.uk](mailto:psi18@leeds.ac.uk), quoting 'blog post' in the subject line. Please be aware that blog posts, comments and other material will be subject to the conference moderation policy (as set out in the April newsletter and here in full: <http://www.ja.net/documents/publications/policy/aup.pdf>)

If your wireless device is already connected to 'eduroam', you will be able to connect to the University of Leeds wireless service without having to take any further steps. Meanwhile, University of Leeds login details are available to all delegates at registration. There is good wireless coverage on campus. And delegates will have access to a PC cluster in Parkinson building, room B25.

## **Sustainability**

Wherever possible we have endeavoured to consider sustainability and the environment in the planning and production of PSi#18. The paper we are using for all printed materials is recycled and the conference bags for delegates are also made from recyclable materials. Recycling points for paper, cans and plastic are available in all University conference venues and additional points for glass collection can be found adjacent to the precinct area on campus.

## **Welcome from the PSi president**

'Exclusive: New Greek PSI haircut around 30-50 percent' announced Reuters.com shortly before our Regional Research Cluster event *Encounters in Synchronous Times* in Athens last November. PSi, so it appeared, was prominently present in the media coverage of the developments in Greece. The 30 to 50 percent PSI haircut refers to the role of private sector investment in the restructuring of the financial sector. The article at Reuters explains how 'under a voluntary debt restructuring deal private creditors would end up taking a loss of about 21 percent in the net present value of their Greek bond holdings—what is called a “haircut”—contributing an estimated 50 billion euros on a net basis through mid-2014.' Private sector investment and Performance Studies international: quite an encounter in synchronous times.

*We Cut Heads* is the name of a place in Amsterdam that is a combination of gallery, hairdresser, stylist and fancy hangout, and all at the same time. *We Cut Heads* offers maximum performance designed to meet the needs of the contemporary consumer. *We Cut Heads* (1983) is also the title of the film that was Spike Lee's masters thesis at the Tisch School of the Arts in New York. This film is set in a barbershop where customers come to hang out, discuss, and maybe get a haircut, or not. It is a place that is about many things but consumerism and maximized performance. The manager, Zack, took over this business after his predecessor Joe was killed by a gangster who used the shop to cover up mafia activities. Zack wants to keep the shop legitimate but the gangster wants to continue the deal he had with Joe. *We Cut Heads* thus describes the double identity of the shop, and reads as the threat posed to the shop owner trying to protect his business—cutting hair—from a power network trying to do its own business through his shop. A system that cuts heads.

From private sector investment to a fancy hairdresser in Amsterdam to a Spike Lee movie to Performance Studies international, a set of connections emerges, pointing towards the complex relationships between culture, industry and performance: the relationships PSi#18 invites us to think about. The Call for Proposals raises important questions about the relationships between economic and cultural values, the economic efficacies of performance practice and the performance of cultural industry, the relationship between economy and the performance of cultural identity, the relationship between bodily praxis and economic organization, and many more.



I want to thank Mick Wallis and Joslin McKinney and their amazing team for putting these urgent issues on the PSi agenda, and for all the hard work they invested in organizing this exciting event. Having been the organizer of last year's conference, I am fully aware of what it takes to organize an event as encompassing, rich, and complicated as they are presenting to us. And as if organizing a PSi conference is not enough already, they also initiated and curated a new performance festival next to it. An incredible achievement.

I am looking forward to sharing these rich offerings with you during the days to come and I cannot say how happy I am that this year I only have to arrive in time and enjoy.

**Maike Bleeker,**  
*PSi President*

**12:00 – 17:00**  
**Parkinson Court**

**REGISTRATION**

**14:00 – 16:00**  
**Conference Auditorium**

**‘OPENINGS’ PLENARY**

14:00 – 15:00

**The magnificent vision and the political heart of Geraldine Connor, musician, actor, composer, theorist and cultural activist**

Griselda Pollock, *Professor of the Social & Critical Histories of Art, University of Leeds, UK*

15:00 – 16:00

**Feminist performance: legacies and futures**

Bobby Baker

with

Sarah Bay-Cheng, *Associate Professor & Director of Graduate Studies in Theatre, University at Buffalo, USA*

Dee Heddon, *Dean of Graduate Studies and Reader in Theatre Film and Television Studies, University of Glasgow, UK*

Gerry Harris, *Professor of Theatre Studies, Lancaster Institute for the Contemporary Arts, Lancaster University, UK*

Jenny Lawson, *Lecturer in Performing Arts, Northumbria University, UK*

Roberta Mock, *Professor of Performance Studies, Faculty of Arts, Plymouth University, UK*

Christel Stalpaert, *Professor in Theatre, Performance and Media Studies, Ghent University, Belgium*

Nicola Shaughnessy, *Senior Lecturer in Drama and Theatre Studies, University of Kent, UK*

**18:00 - 23:30**  
**Saviles, Armouries Square,**  
**Armouries Drive, Leeds**  
**LS10 1LT**

**CONFERENCE DINNER**

**18:30 Buffet** (until 19:50)

**19:00 - 19:15 Welcome address**

Joslin McKinney and Mick Wallis, *PSi#18 conference directors;*

Professor Dawn Freshwater, *Pro-Vice-Chancellor for Staff and Organisational Effectiveness, University of Leeds;*

Councillor Adam Ogilvie, *Executive Member for Leisure, Leeds City Council*

**20:00 Performance: *The Price of Everything*, Dan Bye**

**20:45 Dancing**

**23:30 close**



**Thursday 28 June**

**Registration & Helpdesk Parkinson Court 8:00 - 17:00**

**9:00 – 9:30**

**Opening remarks**

**9:30 – 11:00**

**Plenary panel**

**Conference Auditorium**

**Ecologies of performance**

*Peter Eckersall, Associate Professor of Theatre Studies, School of Culture and Communication, University of Melbourne, Australia*

*Dominic Gray, Projects Director, Opera North, Leeds, UK*

*Michael van Graan, Executive Director, African Arts Institute, Cape Town, South Africa*

*Chair: Jisha Menon, Assistant Professor of Drama, Stanford University, USA*

**11:00 – 11:30**

**Parkinson Court**

**BREAK - REFRESHMENTS**

## **Exhibition**

### **Cao Yu – Pioneer of Modern Chinese Drama**

*Clothworkers Centenary Hall Foyer, University of Leeds  
Wednesday 27 June – Sunday 1 July 2012*

This photographic exhibition displayed on twenty banners is a presentation on China's foremost dramatist, Cao Yu (1910-1996). From his experience of the greatest upheavals in the history of 20th century China, Cao Yu's life and career exemplify the dilemmas and difficulties faced by generations of Chinese intellectuals, offering a vivid narrative of modern China. The exhibition also illustrates how 'spoken drama', originating as an imported form of Western drama in contrast to China's indigenous song-dance theatre, has succeeded in establishing its own identity as a popular genre among today's young people.



## Thursday 28 June

Registration & Helpdesk Parkinson Court 08:00 - 17:00

11:30 - 13:00

*Articulations*

Shift

**Parkinson Court, Room 18**

### PARALLEL SESSIONS 1.1

**Carpe Minuta Prima (11.30-18.00)** Brian Lobel ( UK)/Michelle Castaneda (UK) /Andrew Bill Roberts (UK)

*Articulations*

Curated panel

**Baines Wing 2.37**

**National performance as cultural industry: performing Irish identity panel 1** Aoife Monks (UK) /Mark Phelan (UK)/ Aoife McGrath (Ireland)

*Articulations*

Curated panel

**Michael Sadler, Rupert Beckett LT**

**New ecologies of Butoh: expanding and exploding 'cultural' articulations** Hayato Kosuge (Japan)/ Takashi Morishita (Japan) /Yu Homma (Japan) /Katherine Mezur (USA)

*Articulations*

Paper panel

**Music LT1**

**Performing humanity (conflict/healing through performance)** Emma Willis (New Zealand) / James Thompson (UK) Chair: Helen Nicholson

*Articulations*

Paper panel

**Music LT2**

**The economy of culture** Maryrose Casey (Australia)/ Meike Wagner (Germany)/ Margherita Laera (UK) Chair: Joanne Zerdy

*Articulations*

Shift

**Parkinson Court**

**Whakaahuatua: the way we colour our mana: the way we labour our waewae** Mark Harvey (New Zealand) / Te Oti Rakena (New Zealand) / Cat Ruka (New Zealand) / Raukura Turei (New Zealand) / Nanako McIntosh Uchida (New Zealand)

*Commercial*

Roundtable discussion

**Baines Wing 3.06**

**Rethinking academic performance: industry, culture, pedagogy**  
Moderator: Lindsey Mantoan (USA)

*Ecology*

Shift

**stage@leeds foyer**

**Ecologies of siting: a durational attractor for (re)distributed attention** Alanna Thain (Canada)/ Christoph Brunner (Canada)/ Bianca Scliar (Canada)

*Ecology*

Paper panel

**Parkinson B.10**

**Performance, place and economics** Caroline Smith (UK) /Lisa Vinebaum, (USA) / Alexa Taylor (Australia) Chair: Matt Hawthorn

*Ecology*

Shift

**Parkinson, Centenary Gallery**

**Sentimental Constructions: an ethico-aesthetics of collaboration**  
Stephanie Springgay (Canada) / Nathaniel Stern (USA) / Nicole Ridgway (USA)

*Ecology*

Curated panel

**Michael Sadler LG.15**

**Shakespearean performance economies / Shakespearean performance ecologies** Peter Marx (Germany) / and Aneta Mancewicz (UK) / Katy Alexander (Australia).

Thursday 28 June

Registration & Helpdesk Parkinson Court 08:00 - 17:00

*Relations*

Paper panel

**Parkinson B.08**

**Cultural identity and heritage** Marisa Keuris (South Africa) /Cassandra Duell (Australia)/ Chair: Johanna Householder

*Relations*

Shift

**Parkinson Court**

**What is it Worth? (Market-based memory) (11.30-18.00)** Jeff McMahon (USA)

*Training*

Curated panel

**Clothworkers South G.14**

**'A proper actor'? The politics of training for learning disabled actors** Emma Gee (UK)/Matt Hargrave (UK)/Tim Wheeler (UK)/Alan Clay (UK)/Jez Colbourne (UK)/Ana Marie Heslop (UK)

*Training*

Curated panel

**Baines Wing, Miall LT 2.34**

**Beyond training :: event experience in education** Dorita Hannah (New Zealand) / Beth Weinstein (USA) /Rodrigo Tisi (Chile) / Kathleen Irwin (Canada) / Lise Brenner (USA)

*Training*

Paper panel

**Parkinson B.11**

**Materialities and threads** Helene Vosters (Canada) / Joshua Lubin-Levy (USA) Chair: Elyssa Livergant,

*Training*

Shift

**Clothworkers South G.11**

**Training : Ideology : History (closed session)**

*Value*

Shift

**Clothworkers South 2.03**

**Choreographing calculation** Jasmina Založnik (Slovenia)/ Pia Brezavšček (Slovenia) / Nika Arhar (Slovenia) / Katja Čičigoj (Slovenia) / Saška Rakef (Slovenia)

*Value*

Paper panel

**Parkinson B.09**

**Evaluations and efficacies** Andrew Ormston (UK) / Ben Walmsley, (UK) / Barbara Orel (Slovenia) Chair: Calvin Taylor

*Value*

Shift

**stage@leeds, Alec Clegg studio**

**How to catch a dog in a bucket** Eirini Kartsaki (UK)/Joe Kelleher (UK)

*Value*

Paper panel

**Music LT3**

**Tourism, pilgrimage and heritage** Zoe Reeve (South Africa) / Phil Smith (UK)/ Peter O'Rourke (UK)/ Chair: Anna Upchurch

*Value*

Paper panel

**Music LT4**

**Uncanny potentials** Elaine O'Sullivan (UK)/ Aliza Shvarts (USA) / Natasha Lushetich (UK) Chair: Jennifer Parker-Starbuck

13:00 - 14:30

LUNCH BREAK

13.00 -16.00

Value

shift

University Square Precinct

Ten Cents a Dance: Serve/Us Economy

Alison Matthews (UK)

13.00 - 21.00

Ecology

shift

St. Georges Field

Earthrise Repair Shop – Meadow Meander Baz Kershaw (UK)

13.15 - 14.15

Parkinson B.09

'Meet the Editors': how to get published in the *Journal of Theatre, Dance and Performance Training*

13:15 - 14:15

Parkinson Centenary  
Gallery

*The Drama Review* - Publisher's Book Launch

## LUDUS FESTIVAL LEEDS

Ludus Festival Leeds is a new venture in contemporary performing arts that celebrates Leeds as an international centre of excellence in theatre and performance. Leeds-based artists, producers and venues have come together with an exciting mix of renowned artists from around the world. Leeds residents and visitors alike can look forward to performances, installations and street theatre across the City centre and online.

13.15 - 13.55

The Edge

*Synchronised* Balbir Singh Dance Company

16.30 - 18.15

meet in Parkinson Court

*City Walk* Yorkshire International Performing Arts Network

19.30 - 21.00

Howard Assembly Room

*Ganapati* Adishakti

See <http://www.ludusfestival.org/> for details of the full Ludus programme and for booking



UNIVERSITY OF LEEDS



## If the Games were for Conferences and Events, we'd probably win.



Great things are about to happen in London next year, but great things are already happening in Leeds now! Meet in Leeds have raised the bar in conference facilities and understand that organising any event takes time and energy. Our team has a winning mentality, delivering the best possible result every time. Specially trained staff go the extra mile to make every meeting a resounding success. Choose The University of Leeds for your next event – you'll definitely end up a winner.

[www.meetinleeds.co.uk/refreshing](http://www.meetinleeds.co.uk/refreshing)

[www.facebook.com/meetinleeds](https://www.facebook.com/meetinleeds) [www.twitter.com/meetinleeds](https://www.twitter.com/meetinleeds)

t: 0113 343 6100 e: [enquiries@meetinleeds.co.uk](mailto:enquiries@meetinleeds.co.uk)



FACULTY OF HUMANITIES  
UNIVERSITY OF COPENHAGEN

**Thursday 28 June**

**Registration & Helpdesk Parkinson Court 08:00 - 17:00**

**14:30 - 16:00**

**PARALLEL SESSIONS 1.2**

*Articulations*

Shift

**Parkinson, Room 18**

**Carpe Minuta Prima performances (11.30-18.00)** Brian Lobel (UK)/  
Michelle Castaneda (UK)/Andrew Bill Roberts (UK)

*Articulations*

Curated Panel

**Michael Sadler LG.15**

**Connected communities? relational performances and cultural (in) articulations** Gerry Harris (UK)/Sally Mackey (UK)/Jane Milling (UK)/  
Roberta Mock (UK)

*Articulations*

Roundtable

**Michael Sadler LG10**

**Kai tāima/korero tāima: fill me up** Mark Harvey (New Zealand) Te  
Oti Rakena (New Zealand)/Cat Ruka Manukau (New Zealand)/Nanako  
McIntosh (New Zealand)/Raukura Turei (New Zealand)

*Articulations*

Paper panel

**Parkinson B.09**

**Medicalizing performance** Lisa Erdman (Finland)/ Kati Sweaney (US)/  
Chair: Mark Phelan

*Articulations*

Curated panel

**Baines Wing 2.37**

**National performance as cultural industry: performing Irish identity panel 2** Mary Ann Bolger (Ireland)/ Lionel Pilkington (Ireland)

*Articulations*

Shift

**Baines Wing 3.06**

**Nightwalks with Teenagers introductory talk (14.30-15.30)**  
Stephanie Springgay (Canada)/Darren O'Donnell (Canada)/ Saniya  
Ansari (Canada)

*Articulations*

Roundtable

**Michael Sadler LG.19**

**Somebody's other – crossing cultures in performance practice**  
Martin Welton (UK)/Christopher Bannerman (UK)/Steffi Sachsenmeier  
(UK)

*Commercial*

Paper panel

**Parkinson 1.08**

**Amateur as a strategy of resistance** Johanna Linsley (UK)/ Stefan  
Aquilina(Malta)/Chair: Susan Daniels

*Ecology*

Shift

**St. Georges Field**

**Earthrise Repair Shop – Meadow Meander (13.00 -21.00)**  
Baz Kershaw (UK)

*Ecology*

Paper panel

**Parkinson B.11**

**Performing environmental risk** Christel Stalpaert (Belgium)/ Tamara  
Ashley (UK)/ Simone Hancox (UK)/ Chair: Christoph Brunner

*Ecology*

Paper panel

**Music LT4**

**Performing urban architecture** Scott Palmer (UK)/ Gillian Dyson (UK)/  
Chair: Dorita Hannah

*Relations*

Curated panel

**Parkinson B.08**

**Business models and art organisations** Balbir Singh (UK)/ Titania  
Hanrahan (UK)



## Thursday 28 June

Registration & Helpdesk Parkinson Court 08:00 - 17:00

### *Relations*

Curated panel

**Michael Sadler, Rupert Beckett LT**

### **Live art and performance in history and the politics of inclusion**

(14.30-18.00) Amelia Jones (Canada)/Alpesh Patel (USA)/Meiling Cheng (USA)/Jane Chin Davidson (USA)/ Jacek Kolasiński (USA)/Lisa Newman (UK)/Sanaz Razi (UK)/ Marin Blažević (Croatia)

### *Relations*

Shift

**stage@leeds, Dance Studio**

### **The industry of forgetting**

Maria Hetzer (UK)/ Cara Berger (UK)/

Awelani Moyo (UK)/ Maiada Salfiti (UK)/ Iwona Hrynczenko (UK)

### *Relations*

Shift

**Parkinson Court**

### **What is it Worth? (Market-based memory) (11.30-18.00)**

Jeff McMahon (USA)

### *Training*

Paper panel

**Parkinson B.10**

### **Labour, training and innovation in live and performance art 1**

Deirdre Heddon (UK)/ Pilvi Porkola (Finland)/ Heike Roms (UK)/ Chair: Frank Camilleri

### *Training*

Paper panel

**Music LT2**

### **The artist as worker/producer 1**

Serap Erincin (USA)/ Elisa Belem (Brazil)/ Gabriel Levine (Canada)/ Chair: Kat Low

### *Value*

Curated panel

**Baines Wing, Miall LT 2.34**

### **Black currencies and black currents: (re)valuing the performance of blackness in symbolic and material industries**

Jakeya Caruthers (US)/ Isaiah Wooden (USA)/ Cecilio Cooper (USA)

### *Value*

Curated panel

**Music LT1**

### **Self-gratifiers: feminist appropriations in the performances of**

**Narcissister and Ann Liv Young (14:30-16:30)**

Ariel Osterweis (USA)/ Anna Fisher (USA)/ Isabelle Lumpkin (USA)/ Ann Liv Young (USA)/

Lucian Gomoll (USA)

### *Value*

Shift

**University Square Precinct**

### **Ten Cents a Dance: Serve/Us Economy (13.00 -16.00)**

Alison Matthews (UK)

### *Value*

Shift

**Music LT3**

### **Wulfrunian futures presents: why not Wolverhampton?**

Tom Richards (UK)/ Jack Richards (UK)/ Bill Brookhouse (UK)/ Alex

Hogan (UK)

### Meeting

**Michael Sadler LG.17**

### **Intermediality Working Group meeting (14.30-18.00)**

Convenors: Sigrid Merx (Netherlands)/ Andy Lavender (UK)

16:00 - 16:30

**Parkinson Court**

### **BREAK - REFRESHMENTS**



**Thursday 28 June**

**Registration & Helpdesk Parkinson Court 08:00 - 17:00**

**16:30 - 18:00**

**PARALLEL SESSIONS 1.3**

*Articulations*

Shift

**Parkinson Court, Room 18**

**Carpe Minuta Prima performances (11.30-18.00)** Brian Lobel (UK)/  
Michelle Castaneda (UK)/Andrew Bill Roberts (UK)

*Articulations*

Paper panel

**Parkinson B.08**

**Cultural policy and cultural identity** Klaas Tindemans (Belgium)/  
Keren Zaiontz (UK) /Robert De Guzman (UK)/ Chair: Maria  
Chatzichristodoulou

*Articulations*

Shift

**Clothworkers South 2.03**

**Encounters in a-synchronous time – a post-cluster shift**  
Konstantina Georgelou (Netherlands)/Danae Theodoridou (UK)/Efrosini  
Protopapa (UK)

*Articulations*

Curated panel

**Baines Wing Miall LT 2.34**

**The precarity of mobility: performance, labour and movement** Mick  
Douglas (Australia)/Fiona Wilkie (UK)/Martin Welton (UK)

*Commercial*

Paper panel

**Parkinson 1.08**

**Amateur participation** Joy Brooke Fairfield (USA)/ Andrew Jones  
(USA)/ Elena Perez (USA)/ Chair: Susan Daniels

*Ecology*

Shift

**St. Georges Field**

**Earthrise Repair Shop – Meadow Meander (13.00 -21.00)**  
Baz Kershaw (UK)

*Ecology*

Paper panel

**Michael Sadler LG.15**

**Eco-critical landscapes** Matt Hawthorn (UK)/ Carolina E. Santo  
(France)/ Lisa Moren (USA)/Chair: Tanya Augsburg

*Ecology*

Paper panel

**Music LT4**

**Theorising eco-performance** Gareth Somers (UK)/Tuija Kokkonen  
(Finland)/Sozita Goudouna (UK)/ Chair: Carl Lavery

*Relations*

Curated panel

**Michael Sadler Rupert  
Beckett LT**

**Live art and performance in history and the politics of inclusion  
(14.30-18.00)** Amelia Jones (Canada)/Alpesh Patel (USA)/Meiling Cheng  
(USA)/Jane Chin Davidson (USA)/ Jacek Kolasiński (USA)/Lisa Newman  
(UK)/Sanaz Razi (UK)/ Marin Blažević (Croatia)

*Relations*

Paper panel

**Parkinson B.11**

**Outside performance studies** Jan Suk (Czech Republic)/ Peta Tait  
(Australia)/ Chair: Peter Eckersall

*Relations*

Shift

**Parkinson Court**

**What is it Worth? (Market-based memory) (11.30-18.00)** Jeff  
McMahon (USA)

Thursday 28 June

Registration & Helpdesk Parkinson Court 08:00 - 17:00

Training  
Paper panel  
Parkinson B.10

**Labour, training and innovation in live and performance art 2**  
Anja Lindelof (Denmark)/ Eser Selen (Turkey)/ Nikolas Wakefield (UK)/  
Chair: Calvin Taylor

Training  
Paper Panel  
Music LT2

**The artist as worker/producer 2** Brian Schultis (USA)/ Raegan Truax-  
O’Gorman (USA)/ Chair: Kay Hepplewhite

Training  
Shift  
Clothworkers South G.14

**Work songs: exploring immaterial and emotional labour as  
performance material** Broderick Chow (UK)/ Tom Wells (UK)/Louise  
Owen (UK)

Value  
Shift  
stage@leeds, Alec Clegg  
studio

**Autism Affects** Melissa Trimmingham (UK)/ Nicola Shaughnessy (UK) /  
Mary Jane Stevens (UK) / Gemma Williams (UK) / Emma Greenslade  
(UK)

Value  
Shift  
TV studio

**Graduate Student shift: playmachineplay** Coordinator: Steph  
Berntson (Canada)

Value  
Paper panel  
Music LT3

**Urban and post industrial contexts** Johanna Dangel (Switzerland)/  
Immanuel Schipper (Switzerland)/ Charlotte Bell (UK)/ Paulina Popek  
(Poland)/ Chair: Katie Beswick

Meeting  
Michael Sadler LG.17

**Intermediality Working Group meeting (14.30-18.00)** Convenors:  
Sigrid Merx (Netherlands)/ Andy Lavender (UK)

Professional development  
Michael Sadler LG.19

**The industry of performance studies: a professional development  
session sponsored by the Emerging Scholars Committee and  
Graduate Students Committee** Joshua Edelman (UK)/ Mechtild  
Widrich (Switzerland)

Clothworkers South G.11

**Porous Studio: A project of the Artists Committee (16.30-19.30)** Ray  
Langenbach (Malaysia)/ Nicholas Johnson (Ireland)

#### THURSDAY EVENING EVENTS

18:00 – 19:30  
Student Union, Terrace Bar

**Graduate Students social**

13.00 -21.00  
Ecology  
Shift  
St. Georges Field

**Earthrise Repair Shop – Meadow Meander**  
Baz Kershaw (UK)

Meet 21.30  
Articulations  
Shift  
Millenium Square

**Nightwalks with Teenagers** Stephanie Springgay (Canada)/ Darren  
O’Donnell (Canada)/ Saniya Ansari (Canada)



Roehampton has one of the strongest research profiles among modern universities  
— *The Sunday Times University Guide*

## Department of Drama, Theatre and Performance

Acknowledged as internationally excellent in the most recent UK Research Assessment Exercise, we undertake cutting-edge research that informs teaching on our undergraduate and postgraduate courses.

### Courses

BA Drama, Theatre and Performance  
MA / MRes Performance and Creative Research  
MPhil / PhD

We have one of the most dynamic and interdisciplinary academic teams in Drama in the UK, with international reputations as performance makers, theoreticians, writers, visual artists and curators. The University of Roehampton also has a strong commitment to social equality, supporting one of the most diverse communities of students in the UK.

Find out more at:

[www.roehampton.ac.uk/  
drama-theatre-and-performance](http://www.roehampton.ac.uk/drama-theatre-and-performance)

### Department Staff

Joshua Abrams  
Lis Austin  
Simon Bayly  
Ernst Fischer  
Ewan Forster  
Sarah Gorman  
Susanne Greenhalgh  
Adrian Heathfield  
Chris Heighes  
Joe Kelleher  
Terry O'Connor  
Emily Orley  
Susan Painter  
Jennifer Parker-Starbuck  
PA Skantze  
Ioana Szeman  
Graham White  
Lee White  
Fiona Wilkie

**Honorary Visiting  
Professor 2012–14**  
Jonathan Burrows

## Friday 29 June

Registration & Helpdesk Parkinson Court 08:00 - 17:00

9:30 -11:00

Plenary panel

**Vision, viability & value: three perspectives on the performing arts across cultures, context and nations**

Conference Auditorium

Anuradha Kapur, *Director National School of Drama, New Delhi, India*

Clarissa Ruiz, *Secretary of Culture, Recreation and Sports of the Mayoralty of Bogotá. Former Director of Arts, Ministry of Culture, Colombia, 2002-11*

Sheena Wrigley, *General Director & Joint Chief Executive, West Yorkshire Playhouse, Leeds, UK*

Chair: Bree Hadley, *Senior Lecturer in Performance Studies, Queensland University of Technology, Australia*

9:30 -11:00

*Articulations*

Shift

**Clothworkers South G.14**

**The lost, the found, the fantasy: Urban Meditation (Workshop 1)**

Jane Gabriels (Canada)

11.00 -21.00

*Ecology*

Shift

**St. Georges Field**

**Earthrise Repair Shop – Meadow Meander**

Baz Kershaw (UK)

11:00 – 11:30

Parkinson Court

**BREAK - REFRESHMENTS**

## Friday 29 June

Registration & Helpdesk Parkinson Court 08:00 - 17:00

11:30 - 13:00

*Articulations*  
Paper panel  
**Parkinson B.08**

*Articulations*  
Paper panel  
**Parkinson B.09**

*Articulations*  
Shift  
**Student Union Common Room**

*Articulations*  
Shift  
**Clothworkers South G.14**

*Articulations*  
Shift  
**Alec Clegg**

*Commercial*  
Paper panel  
**Music LT3**

*Ecology*  
Shift  
**St. Georges Field**

*Ecology*  
Shift  
**stage@leeds foyer**

*Ecology*  
Shift  
**Michael Sadler, Banham Theatre**

*Ecology*  
Paper panel  
**Parkinson B.11**

*Relations*  
Shift  
**Clothworkers South 2.03**

*Relations*  
Curated Panel  
**Baines Wing 3.06**

### PARALLEL SESSIONS 2.1

**Culture/capitalism** Kerry Whigham (USA)/ Jimena Ortuzar (Canada)/ Brian Batchelor (Canada)/ Chair: Elyssa Livergant

**Fashion and performance** Franziska Bork Petersen (Sweden)/ Michelle Liu Carriger (USA)/ Brandin Baron-Nusbaum (USA)/ Chair: Joslin McKinney

**Tents will be Shifted: on being from Leeds** Georgina Guy (UK)/ Joe Kelleher (UK)

**The lost, the found, the fantasy: Urban Meditation (Workshop 1) (9.30-13.00)**  
Jane Gabriels (Canada)

**'Torture as Performance': entertainment, pornography, or...?**  
Sara Brady (USA)/ Nicholas Johnson (Ireland)/ Gabriella Calchi-Novati (Ireland)

**Authenticity and amateur performance** Takeo Rivera (USA)/ Steve Greer (UK)/ Ashley Wallington (UK)/ Chair: Patrick Duggan

**Earthrise Repair Shop – Meadow Meander (11.00 -21.00)**  
Baz Kershaw (UK)

**Ecologies of siting: a durational attractor for (re)distributed attention** Alanna Thain (Canada)/ Christoph Brunner (Canada)/ Bianca Scliar (Canada)

**Fireflies in Molasses** Jasmine Mahmoud (USA)

**Performing fluidity in watery places** Alys Longley and Rebecca Wood (New Zealand)/ Jiayun Zhuang (USA)/ Rachel Sweeney (UK)/ Chair: Clare Finburgh

**Ignorance and negotiation (in the rehearsal process)** Efrosini Protopapa (UK)/ Kathrin Felzmann (Germany)/ Susanna Recchia (UK)/ Joe Wild (UK)/ Andrew Graham (UK)

**Performance in Historical Paradigms Working Group, panel 1**  
Tracy Cecile Davis (USA)/ Gwyneth Shanks (USA)/ Michelle Liu Carriger (USA)



**Friday 29 June**

**Registration & Helpdesk Parkinson Court 08:00 - 17:00**

*Relations*  
Paper panel  
**Music LT1**

**Space, technology and performance** Beth Weinstein (USA)/ Simon Hagemann (France)/ James Harding (UK)/ Chair: Claire Hicks

*Relations*  
Shift  
**Parkinson Court**

**What is it Worth? (Market-based memory) (11.30-18.00)**  
Jeff McMahon (USA)

*Training*  
Shift  
**Parkinson, Centenary Gallery**

**Journeys and their ends: training, social division, and quality (11.30-14.00)** Simon Shepherd (UK)/ Catherine McNamara (UK)/ Helen Heaslip (UK)/ Richard Harrison (UK)/ Liselle Terrett (UK) / Sarah Edwards (UK)

*Training*  
Roundtable  
**Michael Sadler LG.19**

**Performance and the digitalization of research** Jon McKenzie (USA)/ Heike Roms (UK)/ Talia Rodgers (UK)/Toni Sant (UK)

*Training*  
Paper panel  
**Music LT2**

**Tradition and innovation/ancient and modern training**  
Paul Allain (UK)/Katherine Mezur (USA)/ Chair: Peta Tait

*Training*  
Shift  
**Clothworkers South G.11**

**Training : Ideology : History (closed session)**

*Training*  
Curated panel  
**Michael Sadler LG.17**

**What price participation?: agency, ethics, aesthetics and impact in participatory performance** Rosemary Klich (UK)/ Nicola Shaughnessy (UK)/Melissa Trimmingham (UK)/ Pablo Arenillas-Pakula (UK)

*Value*  
Paper panel  
**Parkinson 1.08**

**Articulating value** Morigan Mullen (New Zealand)/ Celeste Fraser Delgado (USA)/Katerina Paramana (UK)/ Chair: Wolf-Dieter Ernst

*Value*  
Installation/ Workshop  
**Parkinson Court**

**Communist Gallery TV – Cultural Olymp/ads (11.30-18.00)**  
Charlie Fox (UK)

*Value*  
Curated panel  
**Michael Sadler LG.15**

**Refuse performance, part 1: value and efficacy** Owen Parry (UK)/ Mathias Danbolt (Norway)/ João Florêncio (UK)

*Value*  
Curated panel  
**Michael Sadler, Rupert Beckett LT**

**The actuality of Adorno: theatre, performance, and the Culture Industry reconsidered (again) panel 1 (11.30-13.30)**  
Liz Tomlin (UK)/ Freddie Rokem (Israel)/ Marc Nicolas Sommer (Switzerland)/ Karoline Gritzner (UK)/ Chair: Will Daddario

## Friday 29 June

13:00 – 14:30

Registration & Helpdesk Parkinson Court 09:00 - 17:00

LUNCH BREAK

13:00 - 15.00

*Training*

Shift

Leeds Industrial Museum

**Thread-by-Thread: A participatory, deconstructing militarism (un) sewing circle**

Helene Vosters (Canada)

11.00 -21.00

*Ecology*

Shift

St. Georges Field

**Earthrise Repair Shop – Meadow Meander**

Baz Kershaw (UK)

13.30-16.30

*Commercial*

Shift

Benetton shop, The Light,  
The Headrow, Leeds, LS1  
8TL

**Ugly Scenes** Barnaby King (USA)/Richard Talbot (UK)

13.15-14.15

Professional development  
session

Michael Sadler, LG15

**'Balancing acts'** Lara Shalson (UK) on behalf of PSi Emerging Scholars  
Committee and the PSi Graduate Students Committee

13:15 - 14:15

Parkinson Court

Matthew Reason 'Meet the Editor Session' - Intellect Bookstand

### LUDUS FESTIVAL LEEDS: SELECTED HIGHLIGHTS FOR FRIDAY

13.15 – 13.55

Riley Smith Hall,  
Leeds University Union

***Still Lives Different Light***

14.00 – 15.30

Victoria Gardens,  
Leeds City Centre

***Lo Monstre Efimer***

19.45 – 21.00

West Yorkshire Playhouse

***Audience Ontroerend Goed***

See <http://www.ludusfestival.org/> for details of the full Ludus programme and for booking





## Department of **Theatre, Film and Television Studies** at Aberystwyth

### We offer the following courses:

#### Undergraduate Degree Schemes:

- Performance Studies
- Drama and Theatre Studies
- Scenography and Theatre Design
- Film and Television Studies
- Media and Communication Studies

Many joint combinations are also available.

#### Postgraduate Degree Schemes:

- MA Practising Theatre and Performance
- MA Scriptwriting
- MA Film Studies
- MA Documentary Practice
- MA Media History
- MA Politics, Media and Performance
- MA Cyfryngau Creadigol Ymarferol

The Department also offers extensive opportunities for study towards PhD; contact us for more information.

*The Department offers an unrivalled choice of modules, creative facilities and staff expertise.*

### For further information contact:

Nick Strong, Admissions Tutor  
**Department of Theatre, Film & Television Studies,**  
Telephone: +44(0)1970 622828  
Fax: +44(0)1970 622831  
E-mail: [nbs@aber.ac.uk](mailto:nbs@aber.ac.uk)

[www.aber.ac.uk/tfts](http://www.aber.ac.uk/tfts)



## Friday 29 June

Registration & Helpdesk Parkinson Court 08:00 - 17:00

14:30 - 16:00

*Articulations*

Paper panel

**Michael Sadler LG.17**

### PARALLEL SESSIONS 2.2

**Articulations of otherness** Katia Arfara (Greece)/ Bryanne Young (USA)/ Katherine Brewer Ball (USA)/ Chair: Kimberley McLeod

*Articulations*

Shift

**Clothworkers Centenary Concert Hall**

**New voices, sustainable futures: music and theatre in the 21st Century (14.30-18.00)** Pamela Karantonis (UK)/ Nick Till (UK)/ Christine Chibnall (UK)/ George Rodosthenous (UK)/ Craig Vear (UK)/ Áine Sheil (UK)

*Articulations*

Paper panel

**Parkinson B.11**

**Participation, activism, resistance** Kevin Brown (USA)/ Lynne McCarthy (UK)/ Margie-Margarida Rauen (Brazil)/Chair: Katie Beswick

*Articulations*

Curated Panel

**Michael Sadler LG.19**

**Studies in music theatre in Japan: past and present of appropriation, consumption, education and research (14.30-18.00)** Mori Yoshiko (Japan)/ Itoh Yuki (Japan)/ Yamanashi Makiko (Japan)/ Shirai Fumito (Japan)

*Articulations*

Paper panel

**Music LT1**

**Technology/intermediality** Yatin Lin (Taiwan)/ Luis Campos (UK)/ Chair: Sita Popat

*Articulations*

Shift

**Clothworkers South G.14**

**The lost, the found, the fantasy: Urban Meditation** (Workshop 2 14.30-18.00) Jane Gabriels (USA)

*Commercial*

Paper panel

**Music LT3**

**Amateur performance: between cultural performance and the everyday** Helen Nicholson (UK)/ Sarah Wishart (UK)/ Ivan Ramos (USA)/ Eleanor Skimin (USA)/ Chair: Phil Kiszley

*Commercial*

Roundtable

**Baines 2.37**

**Reading as a woman** Sarah Gorman (UK)/ Jen Harvie (UK)/ Gerry Harris (UK)/ Sophie Nield (UK)/ Lis Austin (UK)/ Sara Jane Bailes (UK)/Keren Zaiontz (UK)

*Ecology*

Curated panel

**Parkinson B.08**

**Digital circulations: mediated performance and social media as emerging ecologies** Sarah Bay-Cheng (USA)/ Jennifer Parker-Starbuck (UK)/ Andy Lavender (UK)

*Ecology*

Paper panel

**Parkinson 1.08**

**Dwelling in and walking through** Fiona Bannon (UK)/ Annette Arlander (Finland)/ Scott Palmer (UK)/ Louise Ann Wilson (UK)/ Chair: David Shearing

*Ecology*

Shift

**St. Georges Field**

**Earthrise Repair Shop – Meadow Meander** (11.00 -21.00) Baz Kershaw (UK)

*Ecology*

Shift

**stage@leeds, Dance Studio**

**The animation project: self-perpetuating motors and sustainable performative economies** Megan Nicely (USA)/ Kate Elswit (USA)

## Friday 29 June

*Relations*

Shift

**Michael Sadler LG.10**

*Relations*

Curated panel

**Baines Wing 3.06**

*Relations*

Shift

**Parkinson Court**

*Training*

Paper panel

**Parkinson B.09**

*Training*

Paper panel

**Parkinson B.10**

*Training*

Shift

**Parkinson, Room 18**

*Value*

Curated panel

**Music LT4**

*Value*

Shift

**Clothworkers South 2.03**

*Value*

Paper panel

**Parkinson Centenary Gallery**

*Value*

Installation/workshop

**Parkinson Court**

*Value*

Shift

**Student Union, Hidden Café**

*Value*

Curated panel

**Michael Sadler, Rupert Beckett**

**LT**

*Value*

Paper panel

**Music LT2**

**16:00-16:30**

**Registration & Helpdesk Parkinson Court 08:00 - 17:00**

**Performance academics performing academically. Or, academic speed dating** Patrick Duggan (UK)

**Performance in Historical Paradigms Working Group, panel 2**

Aniko Szucs (USA)/Ana Bigotte Vieira (Portugal)/ Ioana Szeman (UK)

**What is it Worth? (Market-based memory) (11.30-18.00)**

Jeff McMahon (USA)

**Gesture, habit and expressivity** Frank Camilleri (UK)/ Giulia Vittori (USA)/

Andrea Moon (USA)/Chair: Paul Allain

**Labouring bodies** Katrin Dettmer (USA)/ Donatella Barbieri (UK)/ Greer

Crawley (UK)/ Kathinka Walter (UK)/ Chair: Ben Spatz

**Pause; audience engagement and the blurring of boundaries in participatory performance: a practical investigation through performances**

Pablo Pakula (UK)/ Accidental Collective (UK)

**Census, economy and naturalism** Eve Katsouraki (UK)/ Tony Fisher (UK)/

Broderick Chow (UK)

**Changing money** geheimagentur (Secret Agency)

**Commerce and integrity** Alice O'Grady (UK)/ James Hamilton (USA)/

Rolf Hoefer (France)/ Chair: Peter Eckersall

**Communist Gallery TV – Cultural Olymp/ads (11.30-18.00)**

Charlie Fox (UK)

**Domestic Train Wreck** Melanie Bennett (Canada)/ Aaron Collier (Canada)/

Richie Wilcox (Canada)

**The actuality of Adorno: theatre, performance and the Culture Industry reconsidered (again) panel 2** Chris Gontar (USA)/ Rebecca Dolgoy (UK)/

Rebecca Daker (UK)/ Chair: Will Daddario

**What matters?** Kirsten Broekman (UK)/ Charlie Fox (UK)/ Andrew Westerside (UK)/Chair: Gareth Somers

**BREAK - REFRESHMENTS**

## Friday 29 June

Registration & Helpdesk Parkinson Court 08:00 - 17:00

16:30 - 18:00

### PARALLEL SESSIONS 2.3

*Articulations*  
Paper panel  
Parkinson 1.08

**Audience and participation** Jia-luan Chin (Taiwan)/ Wolf-Dieter Ernst (Germany)/ Jenny Lawson (UK)/ Chair: Sita Papat

*Articulations*  
Curated panel  
Music LT3

**Carpe Minuta Prima- reflection on Thursday performances** Michelle Castaneda (UK)/ Andrew Bill Roberts (UK)/ Saini Mainnen (UK)/ Chair: Brian Lobel (UK)

*Articulations*  
Paper panel  
Parkinson B.09

**Global hybridity** Ivy I-Chu Chang (Taiwan)/ Ilana Salama Ortar (Israel)/ Matthias Regan (USA)/ Chair: Mark Harvey

*Articulations*  
Shift  
Clothworkers Centenary  
Concert Hall

**New voices, sustainable futures: music and theatre in the 21st Century (14.30-18.00)** Pamela Karantonis (UK)/ Nicholas Till (UK)/ Christine Chibnall (UK)/ Craig Vear (UK)/ Áine Sheil (UK) and George Rodosthenous (UK)

*Articulations*  
Paper panel  
Parkinson B.11

**Performance and production of space** Jacqueline Taucar (Canada)/ Julia Listengarten (USA)/ Meredith Rogers (Australia)/ Chair: Kerry Whigham

*Articulations*  
Curated panel  
Michael Sadler LG.19

**Studies in music theatre in Japan: past and present of appropriation, consumption, education and research (14.30-18.00)** Mori Yoshiko (Japan)/ Itoh Yuki (Japan)/ Yamanashi Makiko (Japan)/ Shirai Fumito (Japan)

*Articulations*  
Shift  
Clothworkers South G.14

**The lost, the found, the fantasy: Urban Meditation (Workshop 2) (14.30-18.00)** Jane Gabriels (USA)

*Commercial*  
Curated panel  
Michael Sadler, Rupert Beckett LT

**A matter of life and death: the lure of football, theatre and city or why the Globe should be more like Anfield** John Bennett (UK)/ Andrew Sherlock (UK)/ Ros Merkin (UK)

*Commercial*  
Curated panel  
Baines Wing Miall LT 2.34

**Consuming childhood: past, present and future** Helen Freshwater (UK)/ Gilli Bush-Bailey (UK)/ Joshua Abrams (UK)/ Lourdes Orozco (UK)

*Ecology*  
Shift  
St. Georges Field

**Earthrise Repair Shop – Meadow Meander (11.00 -21.00)**  
Baz Kershaw (UK)

*Relations*  
Paper panel  
Parkinson B.08

**Fiction, realities and the ideology of terror** Dave Calvert (UK)/ Natalie Mathieson (Canada)/ Abigail De Kosnik (USA)/ Chair: Kara McKechnie

*Relations*  
Shift  
Parkinson Court

**What is it Worth? (Market-based memory) (11.30-18.00)**  
Jeff McMahon (USA)

## Friday 29 June

Registration & Helpdesk Parkinson Court 08:00 - 17:00

### Training

Performed conversation  
**stage@leeds, Alec Clegg  
studio**

**'Dear Potential Participant': thoughts on performance, pedagogy  
and participation** Sara Jane Bailes (UK)/ Karen Christopher (UK)

### Training

Shift  
**Parkinson, Room 18**

**Pause; audience engagement and the blurring of boundaries  
in participatory performance: a practical investigation through  
performances** Pablo Pakula (UK)/ Accidental Collective (UK)

### Training

Paper panel  
**Parkinson B.10**

**Pedagogy, efficacy and resistance** Kay Hepplewhite (UK)/ Joshua  
Williams (USA)/ Ian Watson (USA)/Chair: Alice O'Grady

### Training

Paper panel  
**Parkinson, Centenary  
Gallery**

**Performance, corporations and capitalism** Bree Hadley (Australia)/  
Daniel Johnston (Australia)/ Chair: Mechtild Widrich

### Training

Paper panel  
**Music LT1**

**Sports, olympians and record breaking** Emily Hella Tsaconas (USA)/  
Bettina Brandl-Risi (Germany)/ Yasmine Jahanmir (USA)/Chair: Lisa  
Moren

### Value

Installation/workshop  
**Parkinson Court**

**Communist Gallery TV – Cultural Olymp/ads (11.30-18.00)**  
Charlie Fox (UK)

### Value

Shift  
**Michael Sadler, Banham  
Theatre**

**This Town** Yelena Gluzman (Japan)

### Value

Paper panel  
**Music LT3**

**Undoings** Marina Agathangelidou (Germany)/ Mara Polgovsky Ezcurra  
(Mexico)/ Marco Pustianaz (Italy)/Chair: Kimberly, Jannarone

### Meeting

**Michael Sadler LG.17**

### Dramaturgy and Performance Working Group meeting

Peter Eckersall (Australia)/ Marin Blažević (Croatia)

### Clothworkers South G.11

### Porous Studio: a project of the Artists' Committee (16.30-19.30)

Convenors: Ray Langenbach (Malaysia) / Nicholas Johnson (Ireland)

### FRIDAY EVENING EVENTS

#### Meet 21.30

#### Articulations

#### Shift

**Millenium Square**

#### Nightwalks with Teenagers

Stephanie Springgay (Canada)/ Darren O'Donnell  
(Canada)/ Saniya Ansari (Canada)

#### Meet 23.15

#### Ecology

#### Shift

**stage@leeds foyer**

**Red Route** Stephen Bottoms (UK)



CENTRAL  
SCHOOL  
OF SPEECH & DRAMA  

---

UNIVERSITY OF LONDON

SPONSORS OF PSI 2012

# PRACTICE-BASED RESEARCH IN LONDON

As a specialist centre of excellence, Central School of Speech & Drama is pre-eminent in the UK with industry-specific facilities which support research through practice.

With extensive connections, expanding international links, and as a college of the University of London, Central continues to build bridges between leading-edge practice and advanced academic enquiry. Postgraduate and Doctoral study here gives the opportunity to engage with an area of drama, theatre, scenography or performance in depth and at the highest level of scholarship.

Areas of specialisation include:

- > acting, movement and voice
- > applied theatre
- > concepts and contexts
- > contemporary dramaturgies
- > puppetry and object theatre
- > music theatre and sound.

**Funding is available to excellent applicants.**

[WWW.CSSD.AC.UK/STUDY/POSTGRADUATE](http://WWW.CSSD.AC.UK/STUDY/POSTGRADUATE) | [ENQUIRIES@CSSD.AC.UK](mailto:ENQUIRIES@CSSD.AC.UK)





LEEDS METROPOLITAN UNIVERSITY

# PERFORMING ARTS COURSES

**We're looking for the next generation of exciting and leading Performers.**

**We offer a wide range of exciting courses across the Performing Arts, each of which is supported by state-of-the-art performance equipment and environments in the city of Leeds.**

Our courses include:

- MA Filmmaking
- MA Performance
- MA Music Production
- MSc Audio Engineering
- BA (Hons) Film & Moving Image Production
- BA (Hons) Performance
- BA (Hons) Dance
- BA (Hons) Music Production
- BA (Hons) Music Production & Performance
- BSc (Hons) Music Technology

**For more information:**

**Tel:** 0113 812 3113

**Email:** [course-enquiries@leedsmet.ac.uk](mailto:course-enquiries@leedsmet.ac.uk)



**LEEDS  
METROPOLITAN  
UNIVERSITY**

**[www.leedsmet.ac.uk/study](http://www.leedsmet.ac.uk/study)**



## Saturday 30 June

Registration & Helpdesk Parkinson Court 08:00 - 17:00

09:30 - 11:00

*Articulations*  
Paper panel  
**Michael Sadler LG.19**

### PARALLEL SESSIONS 3.1

**Audience, agency and experience** Adam Alston (UK)/ Leila Jancovich (UK)/ Matthew Reason (UK)/ Chair: Joslin McKinney

*Articulations*  
Paper panel  
**Parkinson B.09**

**Identity/interculturalism** Marios Chatziprokopiou (Greece)/ Hyun Joo Lee (USA)/ Sarah Youssef (Germany)/Chair: Aneta Mancewicz

*Articulations*  
Shift  
**Parkinson, Room 18**

**Inspiration Exchange (09.30-18.00)** Alexander Kelly (UK)

*Articulations*  
Paper panel  
**Parkinson B.10**

**Language, hybridity, diversity** Karina Lemmer (South Africa)/ Millie Taylor (UK)/ Heli Aaltonen (Norway)/ Chair: Peter O'Rourke

*Articulations*  
Roundtable  
**Michael Sadler LG.15**

**Occupy everywhere: a roundtable discussion** Lara Shalson (UK)/ Laura Levin (Canada)

*Ecology*  
Shift  
**St. Georges Field**

**Eartrise Repair Shop – Meadow Meander (11.00 -14.30)**  
Baz Kershaw (UK)

*Ecology*  
Paper panel  
**Parkinson B.08**

**Place, process, protest** Jodie Allison (UK)/ Jennifer Spiegel (Canada)/ Chair: Kevin Brown

*Ecology*  
Curated panel  
**Baines Wing 3.06**

**Practising location: ecologies and economies of spectatorship (9.30 - 11.30)** Andrew Filmer (UK)/ Adrian Kear (UK)/ Carl Lavery (UK)

*Relations*  
Paper panel  
**Music LT3**

**Contemporary and popular culture** T.Nikki Cesare (Canada)/ Ira S. Murfin (USA)/ Wojciech Kowalczyk (Poland)/ Chair: Jan Suk

*Relations*  
Shift  
**University Square Precinct**

**PSi Liberation Front (9.30-18.00)** The Committee (UK)

*Relations*  
Shift  
**Parkinson Court**

**What is it Worth? (Market-based memory) (09.30-18.00)**  
Jeff McMahon (USA)

*Training*  
Shift  
**Clothworkers South 2.03**

**2020: a performance time-machine (9.30-13.00)** Daniel Ladnar (UK)/ Gareth Llyr (UK)/ Esther Pilkington (Germany)

**Saturday 30 June**

**Registration & Helpdesk Parkinson Court 08:00 - 17:00**

*Training*  
Curated panel  
**Baines Wing 2.37**

**Hanging out with clowns: transforming paradigms of contemporary clowning and circus arts in the Americas**

Barnaby King (USA)/ James Hesla (USA)/ Roy Gomez-Cruz (USA)/  
Chair: John Emigh

*Training*  
Shift  
**stage@leeds, Dance Studio**

**Performing cultures of rebellion and their 'economies' of spectacle: a Butoh porous practice/discussion/performance shift** Katherine

Mezur (USA)/ Megan Nicely (USA)

*Training*  
Paper panel  
**Music LT2**

**Training institutions, work and labour** Sadie Hunt (UK)/ Daniel Johnston (Australia)/Christopher Hay (Australia)/Egil Kipste (Australia)/  
Chair: Bettina Brandl-Risi

*Value*  
Paper panel  
**Parkinson 1.08**

**Bodies and belonging** Kirsty Sedgman (UK)/ Carol Marie Webster (Jamaica)/  
Chair: Sally Mackey

*Value*  
Paper panel  
**Parkinson B.11**

**Embodiments** Mark Pizzato (USA)/ Erin Hood (USA)/Chair: Tony Gardner

*Value*  
Paper panel  
**Music LT1**

**Neo-liberal contexts** Jen Harvie (UK)/ Tom Richards (UK)/ Karen Savage (UK)/  
Chair: Mark Harvey

**11:00 – 11:30**  
**Parkinson Court**

**BREAK - REFRESHMENTS**

## Saturday 30 June

Registration & Helpdesk Parkinson Court 08:00 - 17:00

11:30 - 13:00

*Articulations*  
Shift

**Parkinson, Room 18**

### PARALLEL SESSIONS 3.2

**Inspiration Exchange (09.30-18.00)** Alexander Kelly (UK)

*Articulations*

Paper panel

**Music LT3**

**Intermedial/intercultural** Ewa Jelen (Poland)/ Donia Mounsef (Canada)/ Kimberley McLeod (Canada)/ (USA)/ Chair: Meredith Rogers

*Articulations*

Paper panel

**Parkinson B.08**

**Mediating identity: practitioner processes** Victor Manuel Ramirez Ladron de Guevara (UK)/ Oliver Bray (UK)/ Mark Flisher (UK)/ Colleen Daniher (USA)/ Chair: Lonneke Van Heugten

*Articulations*

Paper panel

**Parkinson B.10**

**Protest and resistance** Ray Langenbach (Malaysia)/ Melissa Wansin Wong (USA)/ Heather Rastovac (USA)/ Chair: Amanda Stuart-Fisher

*Articulations*

Paper panel

**Music LT2**

**Tradition, modernity and globalisation** Marcus Tan (Singapore)/ Yin-Ying Huang (Taiwan)/ Sukanya Chakrabarti (USA)/ Chair: Margie-Margarida Rauhen

*Ecology*

Shift

**St. Georges Field**

**Earthrise Repair Shop – Meadow Meander (11.00 -14.30)**

Baz Kershaw (UK)

*Ecology*

Shift

**stage@leeds foyer**

**Ecologies of siting: a durational attractor for (re)distributed attention** Alanna Thain (Canada)/ Christoph Brunner (Canada)/ Bianca Scliar (Canada)

*Ecology*

Paper panel

**Music LT1**

**Revitalising urban place and community** Katie Beswick (UK)/ Charlotte Gray (UK)/ Donna Riley (UK)/ Joel Anderson (UK)/ Chair: Alice O'Grady

*Relations*

Curated panel

**Baines Wing, Miall LT 2.34**

**Critical history: contemporary practice** Emer O'Toole (UK)/ Karen Quigley (UK)/ Mara Lockowandt (UK)

*Relations*

Shift

**Clothworkers South G.14**

**If anyone wonders why rocks break down (installation) (11.30-18.00)** David Shearing (UK)

*Relations*

Shift

**University Square Precinct**

**PSi Liberation Front (9.30-18.00)** The Committee (UK)

*Relations*

Curated panel

**Baines Wing 3.06**

**Punk: from Los Angeles to Leeds** Jennifer Doyle (USA)/ Gavin Butt (UK)/ José Muñoz (USA)

*Relations*

Shift

**Parkinson Court**

**What is it Worth? (Market-based memory) (09.30-18.00)** Jeff McMahon (USA)

## Saturday 30 June

Registration & Helpdesk Parkinson Court 08:00 - 17:00

*Training*  
Shift

**Clothworkers South 2.03**

**2020: A Performance Time-Machine (9.30-13.00)** Daniel Ladnar (UK)/ Gareth Llyr (UK)/ Esther Pilkington (Germany)

*Training*  
Paper panel

**Michael Sadler LG.17**

**International perspectives on training** Christopher Hay (Australia)/ Juliusz Tyszka (Poland)/ Charlott Neuhauser (Sweden)/ Chair: Gabriel Levine

*Training*  
Shift

**stage@leeds, Alec Clegg studio**

**Permission to work differently: designer as auteur** Becs Andrews (UK)

*Training*  
Shift

**Michael Sadler, Banham Theatre**

**Rite of the Butcher: evaluating performance as research (11.30-16.00)** Ben Spatz (USA)

*Training*  
Curated panel

**Michael Sadler LG.15**

**Trained, educated or 'constructed' for industry?: negotiating the balance between educational 'duty of care' and 'industry-ready' professionalism** Mark Seton (Australia)/ Ross Prior (UK)/ David Petherbridge (UK)

*Training*  
Shift

**Michael Sadler LG.10**

**Training: Ideology: History (open session) (11:30 - 13:30)** Jonathan Pitches (UK)/ Maria Kapsali (UK)/Ruru Li (UK)/David Jiang (UK)/Anna Fenemore (UK)/ Mark Evans (UK)/Simon Murray (UK)

*Training*  
Shift

**Clothworkers South G.11**

**The utopian tool kit (11.30-18.00)** Saara Hannula (Finland)/Pekko Koskinen (Finland)

*Value*  
Curated panel

**Michael Sadler, Rupert Beckett LT**

**Are you expedient? market, place, performance** Kimberly Jannarone (USA)/ Paul Rae (Singapore)/ Elizabeth Tomlin (UK)

*Value*  
Paper panel

**Music LT4**

**Aurality, virtuality and place** Lynne Kendrick (UK)/ Fabrizio Manco (UK)/ Thea Brejek Switzerland)/ Chair: Annette Arlander

*Value*  
Paper panel  
**Parkinson 1.08**

**Bodies at work** Jungmin Song (UK)/ Melanie Bennett (Canada)/ Yelena Gluzman (Japan)/ Chair: Nicholas Johnson

*Value*  
Curated panel  
**Baines Wing 2.37**

**Intrinsic instrumentality: problematizing the autonomous function of theatre** Joshua Edelman (UK)/ Louise Ejgod (Denmark)/ Quirijn Lennert Van Den Hoogen (Netherlands)

Meeting  
**Michael Sadler LG.19**

**PSi International Committee meeting (11:30 - 13:30)**  
Chair: Marin Blažević (Croatia)

## Saturday 30 June

Registration & Helpdesk Parkinson Court 09:00 - 17:00

13:00 – 14:30

**LUNCH BREAK**

13:00 - 15:00

*Training*

Shift

**Leeds Industrial Museum**

**Thread-by-Thread: A participatory, deconstructing militarism (un) sewing circle**

Helene Vosters (Canada)

11.00 -14.30

*Ecology*

Shift

**St. Georges Field**

**Earthrise Repair Shop – Meadow Meander**

Baz Kershaw (UK)

13.30-16.30

*Commercial*

Shift

**Benetton shop, The Light,  
The Headrow, Leeds, LS1  
8TL**

**Ugly Scenes** Barnaby King (USA)/Richard Talbot (UK)

Meeting

13.15-14.15

**Baines, Miall LT 2.34**

**PSi Emerging Scholars Committee**

Meeting

13.15-14.15

**Michael Sadler, Rupert  
Beckett LT**

**PSi Graduate Students Committee**

13.15 -14.15

**Parkinson, Centenary  
Gallery**

**Palgrave Macmillan - Publisher's Book Launch**

### LUDUS FESTIVAL LEEDS: SELECTED HIGHLIGHTS FOR SATURDAY

13.15 – 13.55

**The Edge, University of  
Leeds**

***Synchronised*** Balbir Singh Dance Company

13.15 – 13.55

**Riley Smith Hall,  
Leeds University Student  
Union**

***Still Lives*** Different Light

14.30 – 16.00

**Clothworkers Centenary  
Concert Hall, University of  
Leeds**

***St George*** Opera North Resonance

See <http://www.ludusfestival.org/> for details of the full Ludus programme and for booking

# ARTS THEATRE SURREY



Visit [www.surrey.ac.uk/gbf](http://www.surrey.ac.uk/gbf)  
for details on our events and to book online



DANCE / FILM / LITERATURE / MUSIC / THEATRE / VISUAL ARTS

## Saturday 30 June

Registration & Helpdesk Parkinson Court 08:00 - 17:00

14:30 - 16:00

### PARALLEL SESSIONS 3.3

*Articulations*

Shift

**Michael Sadler LG.10**

**Economies of disease, a study in performance and witness**

Marie Garlock (USA)

*Articulations*

Shift

**Parkinson, Room 18**

**Inspiration Exchange (09.30-18.00)** Alexander Kelly (UK)

*Articulations*

Paper panel

**Parkinson B.11**

**Re-mixing and shifting boundaries** Institute For Live Arts Research/  
Mia Perry (Canada)/ Steph Berntson (Canada)/ Chair: Katherine Mezur

*Commercial*

Paper panel

**Music LT1**

**Skills, value and labour** Caleb Lee (Singapore)/ Kai Van Eikels  
(Germany)/ William Huizhu Sun (China)/Chair: Maryrose Casey

*Commercial*

Roundtable

**Parkinson 1.08**

**The Sunday artist explored** Claire Hicks (UK)/ Nicola Carter (UK)/  
Miguel Pereira (Portugal)

*Ecology*

Shift

**Workshop Theatre**

**Alive on the knife edge of now** Adam Strickson (UK)

*Ecology*

Discussion

**Michael Sadler LG.19**

**Earthrise Repair Shop: Meadow Meander** Silencing Seminar  
Baz Kershaw (UK)

*Ecology*

Curated panel

**Baines Wing 3.06**

**Rendering the animal: technologies of animal representation**  
Jennifer Parker-Starbuck (UK)/ Austin McQuinn (Ireland)/ Deke Weaver  
(USA)

*Relations*

Shift

**Clothworkers South G.14**

**If anyone wonders why rocks break down (installation) (11.30-  
18.00)** David Shearing (UK)

*Relations*

Roundtable

**Michael Sadler LG.15**

**New adventures in publishing** Convenor: CJ Mitchell (UK)

*Relations*

Shift

**Clothworkers South 2.03**

**Performance in Historical Paradigms Working Group shift**  
Lisa Peschel (UK)

*Relations*

Shift

**University Square Precinct**

**PSi Liberation Front (9.30-18.00)** The Committee (UK)



## Saturday 30 June

Registration & Helpdesk Parkinson Court 08:00 - 17:00

*Relations*  
Shift  
**Parkinson Court**

**What is it Worth? (Market-based memory) (09.30-18.00)** Jeff McMahon (USA)

*Training*  
Curated Panel  
**Music LT2**

**Doing Knowledge: practice as a challenge to academic research, part 1** Gunhild Borggreen (Denmark)/Peter van den Meijden (Denmark)/Malene Vest Hansen (Denmark)

*Training*  
Paper Panel  
**Parkinson B.08**

**Empathy, selfhood and performance**  
Lynn Lu (UK)/ Linda Taylor (UK)/ Pablo Costa (Brazil)/ Chair: Kathinka Walter

*Training*  
Curated panel  
**Baines Wing 2.37**

**Labour of love: care and practice in participatory performance practices**  
Amanda Stuart Fisher (UK)/ Kat Low (UK)/ Helen Nicholson (UK)/ Sheila Preston (UK)

*Training*  
Shift  
**Michael Sadler, Banham Theatre**

**Rite of the Butcher: evaluating performance as research (11.30-16.00)** Ben Spatz (USA)

*Training*  
Paper panel  
**Music LT3**

**Training, performance, gender and identity**  
Rustem Ertug Altinay (Turkey)/ Tony Perucci (US)/ Anan Nobuko (UK)/ Chair: Nick Hunt

*Training*  
Shift  
**Clothworkers South G.11**

**The utopian tool kit (11.30-18.00)** Saara Hannula (Finland)/Pekko Koskinen (Finland)

*Value*  
Paper panel  
**Parkinson B.09**

**Immersion** Tero Nauha (Finland)/ Debra Watson (UK)/ Bruce Barton (Canada)/ Chair: Lynn Kendrick

*Value*  
Paper panel  
**Parkinson B.10**

**Liveness and authenticity** James Woolley (UK)/ Pedro Manuel (Netherlands)/Lisa Newman (UK)/ Chair: Johanna Householder

*Value*  
Paper panel  
**Music LT4**

**Resistance, disturbance and negotiation** Meiling Cheng (USA)/ Anna Teresa Scheer (Australia)/ Chair: Kara McKechnie

*Value*  
Shift  
**TV Studio**

**Salon de Refuse** Augusto Corrie (UK)/ Owen Parry (UK)/ Sandra Umatham (Germany)/ Rebecca Louise Collins (UK)/ Nikolas Wakefield (USA)

Meeting  
**Michael Sadler LG.17**

**Intermediality Working Group meeting (14.30-18.00)** Convenors: Sigrid Merx (Netherlands)/ Andy Lavender (UK)

**16:00 - 16:30**

**BREAK REFRESHMENTS**

## Saturday 30 June

Registration & Helpdesk Parkinson Court 08:00 - 17:00

16:30 - 18:00

*Articulations*  
Curated panel  
**Michael Sadler, Rupert Beckett LT**

*Articulations*  
Shift  
**Parkinson, Room 18**

*Articulations*  
Shift  
**Michael Sadler LG.10**

*Commercial*  
Paper panel  
**Parkinson B.10**

*Ecology*  
Shift  
**St. Georges Field**

*Ecology*  
Paper panel  
**Parkinson B.08**

*Ecology*  
Shift  
**stage@leeds, Alec Clegg**

*Relations*  
Shift  
**Clothworkers South G.14**

*Relations*  
Shift  
**University Square Precinct**

*Relations*  
Paper panel  
**Music LT4**

*Relations*  
Curated panel  
**Baines Wing 3.06**

*Relations*  
Shift  
**Parkinson Court**

### PARALLEL SESSIONS 3.4

**Back to Back Theatre's *Ganesh versus the Third Reich*: politics, representation and response** Helena Grehan (Australia)/ Peter Eckersall (Australia)/ Bruce Gladwin (Australia)/ Alice Nash (Australia)

**Inspiration Exchange (09.30-18.00)** Alexander Kelly (UK)

**The performative classroom** Monica Stufft (USA)

**Mass appeal: art and the market** Eero Laine (USA)/ Garry Lyons (UK)/ Nicholas Till (UK)/ Chair: George Rodosthenous

**Earthrise Repair Shop – Meadow Meander (16.30 -21.00)**  
Baz Kershaw (UK)

**Environmental aesthetics** Ioana Jucan (USA)/ Joanne Zerdy (USA)/ Clare Finburgh (UK)/ Chair: Fiona Bannon

**The Tower Block –post mortem: the dramaturgy of vulnerability-rethinking the personal and the political** Barbro Rønnin (Norway)/ Kari Veiteberg (Norway)/ Andreas Schille (Norway)

**If anyone wonders why rocks break down (installation) (11.30-18.00)** David Shearing (UK)

**PSi Liberation Front (9.30-18.00)** The Committee (UK)

**Reality and technology in performance** Piotr Woycicki (UK)/ Hein Goeyens (Netherlands)/ Chair: Aneta Mancewicz

**What is here? performativity and artistic research** Karmenlara Ely (Norway)/ Serge Von Arx (Norway)/ Awam Amkpa (USA)

**What is it Worth? (Market-based memory) (09.30-18.00)** Jeff McMahon (USA)

**Saturday 30 June**

**Registration & Helpdesk Parkinson Court 08:00 - 17:00**

*Training*

*Curated Panel*

**Music LT2**

**Doing Knowledge: practice as a challenge to academic research, part 2** Mette Obling Høeg (Denmark)/Laura Luise Schultz (Denmark)/Jens Hesselager (Denmark)

*Training*

*Shift*

**Clothworkers South G.11**

**The utopian tool kit (11.30-18.00)** Saara Hannula (Finland)/Pekko Koskinen (Finland)

*Value*

*Paper panel*

**Michael Sadler LG.19**

**Avant-gardes** Jasmine Mahmoud (USA)/ Claire Warden (UK)/ Chair: Patrick Duggan

*Value*

*Curated panel*

**Baines Wing 2.37**

**Exploring interdisciplinary & collaborative practices in the context of contemporary economic and cultural drivers** Toni Sant (UK)/ Christopher Newell (UK)/ Aristita Albacan (UK)/ Maria Chatzichristodoulou (UK)

*Value*

*Paper panel*

**Parkinson B.09**

**Institutions** Amy Partridge (USA)/ Raffaele Furno (Italy)/ Adair Rounthwaite (USA)/ Chair: Phil Kiszley

*Meeting*

**Michael Sadler LG.17**

**Intermediality Working Group meeting (14.30-18.00)** Convenors: Sigrid Merx (Netherlands)/ Andy Lavender (UK)

## **SATURDAY EVENING EVENTS**

**16.30 -21.00**

*Ecology*

*Shift*

**St. Georges Field**

**Earthrise Repair Shop – Meadow Meander**

Baz Kershaw (UK)

**23:00 – 0:00**

*Articulations*

*Shift*

**Student Union, Terrace Bar**

**Animal Cabaret**

Kimberly Jannarone (US) and Sarah Bay-Cheng (US)

**meet at 23:15**

*Ecology*

*Shift*

**stage@leeds foyer**

**Red Route** Stephen Bottoms (UK)



*Distinguish  
yourself*

# MA Theatre & Performance Studies

The new MA in Theatre & Performance Studies in the English Department at King's College London is for anyone who is interested in engaging critically and creatively with theatre and performance theories and practices.

In addition to being part of the vibrant research culture at King's and being taught by active scholars in the field as well as visiting artists, our students benefit from King's unrivalled location in the heart of London.

**Modules include:**

- Theatre & Performance Theory
- Theatre & Performance Research Methods
- Performance & Live Art
- Performing Rights
- Performance Lab

Students may also complete a Guided Study option which offers internships with a number of leading arts organisations in London, including the Victoria & Albert Museum, the National Theatre Archives and Tate Modern. Modules can also be taken from a range of other MA programmes in the School of Arts & Humanities.

For more information and to apply, visit

**[www.kcl.ac.uk/prospectus](http://www.kcl.ac.uk/prospectus)**

# PERFORMANCE



**F O**

**N D**

**T I**

**U**

**A**

**O**

**N**



**Sunday 1 July**

**Registration & Helpdesk Parkinson Court 08:00 - 17:00**

**9:30 – 11:00**  
**Conference Auditorium**

**PSi ANNUAL GENERAL MEETING**

Address by PSi President Maaïke Bleeker

Dwight Conquergood Award; Routledge Prize; Artist/Scholar/Activist Award

Reports from PSi's committees and working groups

Presentation on the PSi#19 conference at Stanford University, USA in 2013

All conference delegates are warmly invited to attend and contribute to the PSi Annual General Meeting

**11:00 – 11:30**

**BREAK - REFRESHMENTS**

**11.00 -14.30**  
*Ecology*  
Shift  
**St. Georges Field**

**Earthrise Repair Shop – Meadow Meander**  
Baz Kershaw (UK)



## Sunday 1 July

Registration & Helpdesk Parkinson Court 08:00 - 17:00

11:30 - 13:00

### PARALLEL SESSIONS 4.1

*Articulations*  
Curated panel  
**Baines Wing Miall LT 2.34**

**Diasporic acts and the scene of consumption** Joshua Takano  
Chambers-Letson (USA)/ Andre Carrington (USA)/ Stephanie Hsu (USA)

*Articulations*  
Shift  
**Michael Sadler LG.10**

**How fables replace history: Paul Bunyan meets the ‘vanishing Indian’**Michelle Hernandez (USA)

*Articulations*  
Paper panel  
**Parkinson B.09**

**Intercultural translation** Jeremy Bidgood (UK)/ Kellen Hoxworth (USA)/  
Ke Shi (UK)/ Chair: Roberta Mock

*Articulations*  
Shift  
**Clothworkers South G.14**

**Tamara. Sasa. Tamara. II** Sasa Rajšić (Finland)/ Tamara Platiša  
(Canada)

*Articulations*  
Roundtable  
**Clothworkers South G.11**

**‘They do not exist’?:performing resistance in the occupied  
Palestinian territories (11.30-13.30)** Maurya Wickstrom (USA)/  
Rayya El Zein (USA)

*Articulations*  
Paper panel  
**Music LT1**

**Translation and migration** Hypatia Vourloumis (Greece)/ Marios  
Chatziprokopiou (Brazil)/Ruth Hellier-Tinoco (USA)/Simon Parry (UK)/  
Chair: George Rodosthenous

*Commercial*  
Shift  
**Michael Sadler, Banham  
Theatre**

**Ugly Scenes** Barnaby King (USA)/ Richard Talbot (UK)

*Ecology*  
Shift  
**St. Georges Field**

**Earthrise repair shop – Meadow Meander (11.00 -14.30)**  
Baz Kershaw (UK)

*Ecology*  
Curated panel  
**Clothworkers South 2.03**

**Performative diagrammatic practices** Christoph Brunner (Canada)/  
Bianca Mancini (Canada)/ Alanna Thain (Canada)

*Ecology*  
Paper panel  
**Parkinson, Centenary  
Gallery**

**Sex meat and ecology** Kelsey Speakman (Canada)/ Tanya Augsburg  
(USA)/ Chair: Adrian Kear

*Relations*  
Paper panel  
**Michael Sadler LG.19**

**Beauty, fashion and transformation** Rebecca Halliday (Canada)/ Kate  
Adams (UK)/ Stefan Hölscher (Germany)/ Chair: Julia Listengarten

*Relations*  
Other  
**Parkinson B.08**

**Performance in Historical Paradigms Working Group: roundtable discussion** Convenors: Lisa Peschel (UK)/ Aniko Szucs (USA)

*Relations*  
Curated panel  
**Michael Sadler LG.17**

**The bottom line: social relations and market determinations**  
Jane Collins (UK)/ Anna Birch (UK)/ Kathleen Irwin (Canada)

*Training*  
Shift  
**Parkinson 1.08**

**Pause; audience engagement and the blurring of boundaries in participatory performance: a practical investigation (Reflection on Friday's performances)** Pablo Pakula (UK)

*Value*  
Curated panel  
**Music LT3**

**Desire, reciprocity and repetition: three perspectives on the one-on-one encounter** Rachel Zerihan (UK)/ Eirini Kartsaki (UK)/ Brian Lobel (UK)

*Value*  
Paper panel  
**Parkinson B.10**

**Materialities** Stephanie Tam (USA)/ Derek Miller (USA)/ Chair: Becs Andrews

*Value*  
Curated panel  
**Baines Wing 2.37**

**On labour itself** Nicola Conibere (UK)/ Nicholas Ridout (UK)/ Theron Schmidt (UK)

*Value*  
Paper panel  
**Parkinson B.11**

**Precarity, marginalisation and alterity** Tony McCaffrey (New Zealand)/ Ana Vujanovic (Serbia)/ Gigi Argyropoulou (UK)/ Chair: Jonathan Pitches

*Value*  
Curated panel  
**Michael Sadler LG.15**

**Refuse performance 2** Vikki Chalklin (UK)/ Oriana Fox (UK)/ Jay Stewart (UK)

Discussion  
**Michael Sadler, Rupert Beckett LT**

**How PSi thinks Leeds / how Leeds thinks PSi** Ray Langenbach (Malasia)/ Paul Rae (Singapore)

## Sunday 1 July

Registration & Helpdesk Parkinson Court 08:00 - 17:00

13:00 - 14:30

**LUNCH BREAK**

13:15 - 14:15  
Parkinson Court

**Ross Prior Book Signing - Intellect book stand**

13:00 - 15:00

Shift

**Leeds Industrial Museum**

**Thread-by-Thread: A participatory, deconstructing militarism (un) sewing circle**

Helene Vosters (Canada)

11.00 – 14.30

*Ecology*

Shift

**St. Georges Field**

**Earthrise Repair Shop – Meadow Meander**

Baz Kershaw (UK)

14:30 – 16:00

**Conference Auditorium**

**HORIZONS PLENARY**

Reflections on the conference and ways forward.

Delegates are invited to use the blog throughout the conference to record responses, discussions and ideas to help frame the agenda.

16: 00 – 16:30

Parkinson Court

**Refreshments**

**CONFERENCE CLOSES**

## **PSi#18 personnel**

Conference directors: Mick Wallis and Joslin McKinney

Conference organisation and administration: Natasha Rahanu and Ros Bates

Administrative support: Linda Smith

Conference track chairs: Stephen Bottoms, Joslin McKinney, Jonathan Pitches, Sita Popat and Mick Wallis

Schedule and Chairs co-ordinator: Katie Beswick

Porous Shifts liaison: David Shearing

Technical director: Steve Ansell

Technical co-ordination: Chris Megginson

Research assistants: Rosie Hannis and Isla Watton

Volunteer co-ordination: Linda Horsburgh and Frances Craven

Information technology advisor: Tim Banks

Web design: Aaron Thomas and Rhys Williams

Blog moderator: Kara McKechnie

## **Acknowledgements**

We gratefully acknowledge a contribution of £5000 from the University of Leeds' Academic Development Fund; and support in kind from the School of Music and Workshop Theatre.

## **Thanks to:**

Steve Ainsworth

David Cooper

Lee Dalley

David Dixon and the Timetabling and Room Bookings Team

Jane Ford, Access and Community Engagement

Peros Ltd

Beverley Kenny and University Catering

Dan Merrick

Michele Troughton

## **Performance Studies international Board members**

President: Maaïke Bleeker

Secretary: Laura Cull

treasurer: Branislav Jakovljevic

International Committee: Marin Blažević

Artists Committee: Ray Langenbach

Graduate Students Committee: Melissa Wong

Emerging Scholars Committee: Lara Shalson and Rivka Eisner

Independent Scholars Committee: Nicolas Salazar

Prizes and awards: Laura Luise Schultz

Archivist: Tracy C. Davis

Sarah Bay Cheng

Gunhild Borggreen

Bree Hadley

Dorita Hannah

James Harding

Johanna Householder

Laura Levin

Joslin McKinney

Lindsey Mantoan

Jisha Menon

Sigrid Merx

Sophie Nield

Efrosini Protopapa

Ana Vujanovic

Mick Wallis

### **New PSi website**

PSi is very proud to present its brand new website. Please go to [psi-web.org/](http://psi-web.org/) to check it out and to register for the free News Service.



## **PSi awards**

### ***Artist/Scholar/Activist (ASA) award***

PSi has created a new award for outstanding achievement within the cross-disciplinary field of performance, the ASA Award. It is to be given to an Artist/Scholar/Activist who has spent at least a decade

fostering exchange between Artists/Scholars/Activists; and fostering either interdisciplinary or international

collaboration. The Award consists of US\$1000 and conference registration plus travel expenses.

The ASA award for 2012 goes to Bobby Baker. Bobby will be performing her show Mad Gyms and Kitchens as part of Ludus Festival Leeds and participating in the Openings plenary session for the PSi#18

conference.

### ***Dwight Conquergood Award***

Every year the board of PSi makes this award in honour of the memory of Dwight Conquergood to an individual whose work around cultural performance in some way carries a connection to Dwight's own practice. The award covers the cost of attending the annual PSi conference, including travel, accommodation and registration fees.

The winner of the Dwight Conquergood Award for 2012 is Rayya El Zein, City College of New York.

The runners up are Natalie Mathieson, University of Toronto, and Jennifer Capraru, Isoko Theatre.

### ***Routledge Prize***

The prize, sponsored by Routledge, was launched in collaboration with Performance Studies international

at PSi#15 to recognise research excellence at the postgraduate level. It will be awarded annually for a research presentation in the PSi conference academic programme by a graduate student registered at an

institution in the host country or region of the conference. Contenders will be nominated and the award judged by members of the PSi Board. The winner will receive £150 of Routledge books, plus a year's subscription to Performance Research.

### ***Enrichment Bursary***

The Enrichment Bursary award is to support new and unaffiliated artists/scholars/activists, particularly those

from groups under-represented, to attend the PSi conference and make a contribution.

## NOTES

## NOTES

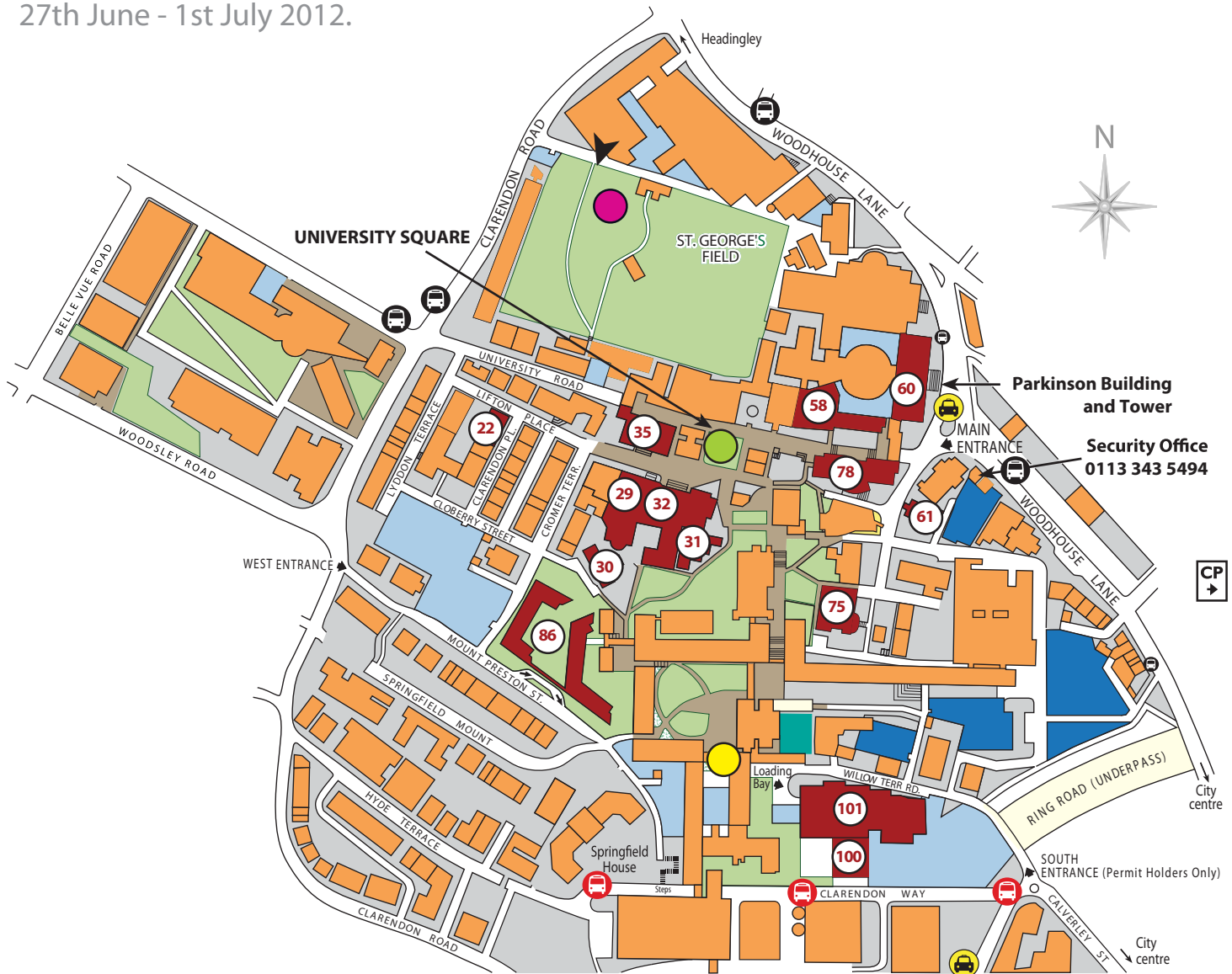
## NOTES





# PSi#18 2012

27th June - 1st July 2012.



## Venues

- Baines Wing: (rooms 1.15, 2.37, Miall LT 2.34 & 3.06) 58
- Clothworkers Centenary Concert Hall 75
- Clothworkers South (rooms 2.03, G.14, G11) 35
- Computer Cluster - Parkinson B25 60
- Conference Auditorium 100
- Dance studio 31
- Michael Sadler building (Rooms LG10, LG15, LG17, LG19, Rupert Beckett LT & Banham Theatre) 78
- Music (rooms LT1, LT2, LT3, LT4 & Clothworkers Centenary Hall) 75
- Parkinson building (Rooms B.08, B.09, B.10, B.11, B.25, 1.08, Centenary Gallery & Room 18) 60

- Parkinson Court - Conference Hub 60
- Riley Smith Hall 32
- stage@leeds (Alec Clegg Studio, Dance studio) 31
- St Georges Field ●
- Student Union (Common Room, Hidden Café, Terrace Bar) 32
- The Edge 101
- TV studio ●
- University Square/Precinct ●
- Workshop Theatre 61

## Budget Accommodation

- Storm Jameson Court 86
- Ellerslie Hall 22
- Lyddon Hall 30
- Refectory 29

## Other Useful Information

- CityBus Stop 🚌
- Taxi Rank 🚕
- Bus Stop 🚌